

800-SERIES

The Angel Series is very popular. This series includes the Empire line, high inset to the bodice with a gore construction over skirt that gives a very flattering controlled fullness to the skirt. We added the very popular Tunic dress to this series, this dress skirt is a very controlled A-line skirt and falls more from the shoulder. Both the Angel and the Tunic have fully attached leotards under their skirts. We also have selected some Special Designs for the 200, 400 and 500 bodices. Additional Add-on Skirts patterns are in this series.

Angel-Tunic Series

Angel

- Angle sleeve•
- Elastic back•

Pattern #801

Cherub

- Belled sleeve•
- Zippered back•

Pattern #802

Renaissance

- Full sleeve•
- Zippered back•

Pattern #803

Cropped Angel

- Belled sleeve•
- Puff sleeve•
- Zippered back•

Pattern #804

Tunic

- No sleeve•
- Bell sleeve•
- Elastic back•

Pattern #805

Tunic X-Back

- No sleeve•
- Bell sleeve•
- Elastic back•

Pattern #806

Off-set Angel

- Puff sleeve•
- Belled sleeve•
- zippered back•

Pattern #807

Slip Tunic

- Zippered back•
- Elastic Back•

Pattern #808

String halter Tunic

- Zippered back•
- Elastic Back•

Pattern #809

Cut Out Bodice

- Tatter sleeve•
- Tatter sleeve•
- Zippered back•
- 200 bodice•

Pattern #810

Tablecloth Skirt

- No sleeve•
- Zippered back•
- 500 bodice•

Pattern #811

Camelot

- Bell sleeve•
- Zippered back•
- 500 bodice•

Pattern #812

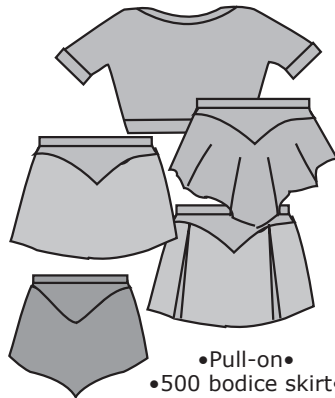
Springtime Angel



- Short Belled sleeve•
- Zipperedback•

Pattern #813

Two-piece



- Pull-on•
- 500 bodice skirt•

Pattern #814

Springtime-200



- Short Belled sleeve•
- Zippered back•
- 200 bodice•

Pattern #815

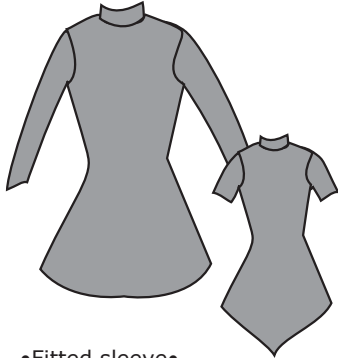
Zip-up



- Short sleeve•
- 3/4 sleeve•
- Zipperedback•
- 500 bodice•

Pattern #816

Tunic T-neck



- Fitted sleeve•
- Zippered back•

Pattern #817

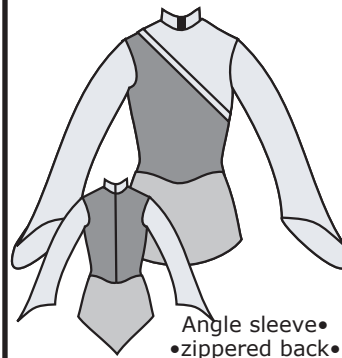
Soft Halter



- No sleeve•
- Zippered back•
- Elastic back•

Pattern #818

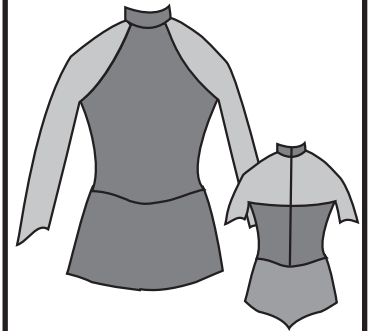
Sunrise



- Angle sleeve•
- zippered back•
- 400 bodice•

Pattern #819

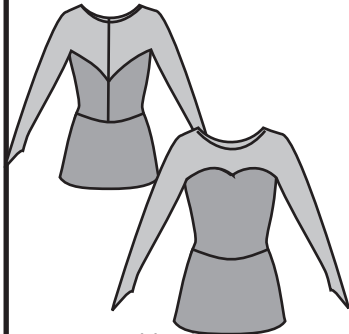
Seamless Raglan



- Zippered back•
- Seamless shoulder•
- 400 bodice•

Pattern #820

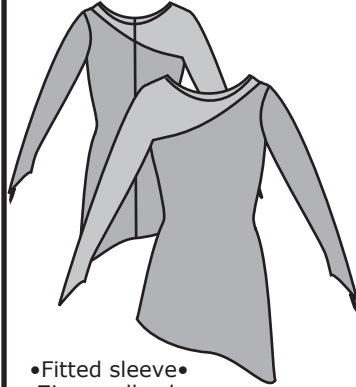
Seamless Sweetheat



- Zippered back•
- Seamless shoulder•
- 400 bodice•

Pattern #821

Off-set Shoulder



- Fitted sleeve•
- Zipperedback•

Pattern #822

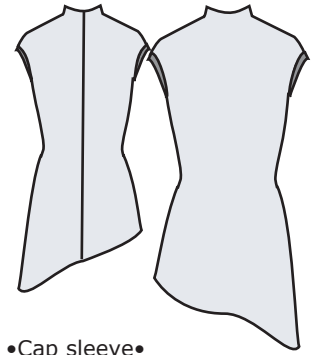
Springtime Crop Tunic



- Short sleeve•
- Zippered back•

Pattern #823

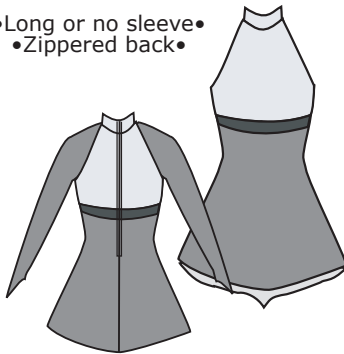
Smoothie Tunic



- Cap sleeve•
- Zippered back•

Pattern #824

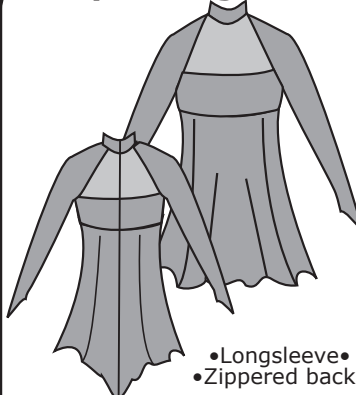
Cropped Raglan Tunic



- Long or no sleeve•
- Zippered back•

Pattern #825

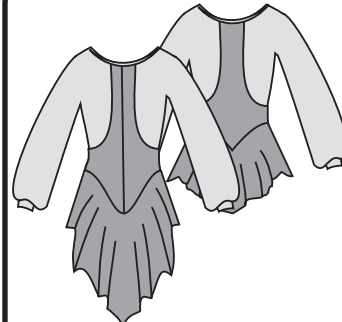
Open Raglan



- Longsleeve•
- Zippered back•

Pattern #826

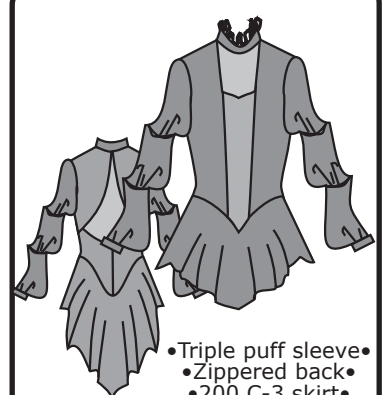
Dance Time



- Short Belled sleeve•
- Seamless shoulder•
- 200 bodice C-3 drop skirt•

Pattern #827

Minuette



- Triple puff sleeve•
- Zippered back•
- 200 C-3 skirt•

Pattern #828

Midnight Dream

- 3/4 Circle Sleeve•
- Zippered back•
- 400 C-1 Skirt•

Pattern #829

Michelle

- Seamless shoulder•
- 400 C-2 drop skirt•
- Zippered back•

Pattern #830

Wendy

- Fitted Angel•
- Tunic Under Skirt•
- Angel Over Skirt•

Pattern #831

Side Drop Add-on Skirt

- Add to you favorite bodice•
- 200-400-500•

200 Cut Line 500 Cut Line 400 Cut Line

Pattern #832

Long C-1 Add-on Skirt

- Add to you favorite bodice•
- 200-400-500•

200 Cut Line 500 Cut Line 400 Cut Line

Pattern #833

Off-set Add-on Skirt

- Add-on Skirt•
- Add to you favorite bodice•
- 200-400-500•
- Short in front•
- Dropped in back•

Pattern #834

Open Sweetheart

- Seamless shoulder•
- Zippered back•

Pattern #835

Cracked Ice Tunic

- Zippered back•
- Short sleeve•

Pattern #836

Tip Top Tunic

- Zippered back•
- Short sleeve•

Pattern #837

Keiko

- Overlay Applique•
- Zippered back Tunic•

Pattern #838

Wrap Add-on Skirt

- Add-on Skirt•
- Add to you favorite bodice•
- 200-400-500•

200 Cut Line 500 Cut Line 400 Cut Line

Pattern #839

Inset Tux

- Back zipper•
- Long fitted sleeve•
- Drop cuff•
- Wrap 500 skirt•

Pattern #840

Off-set Tatter

- Back zipper•
- Long fitted sleeve•
- Off-set front skirt•
- 400 back skirt•

Pattern #841

Open Sweetheart -400

- Back zipper•
- 3/4 fitted sleeve•
- Round cuff•
- Wrap 400 skirt•

Pattern #842

Summer Halter Angel

- Elastic Pull-on•
- No sleeve•

Pattern #843

Summer Halter Tunic

- Elastic Pull-on•
- No sleeve•

Pattern #844

Summer Breeze Angel

- Elastic Pull-on•
- No sleeve•

Pattern #845

Horizontal Stripe Tunic

- Back zipper•
- Long fitted sleeve•

Pattern #846

Cross Body Tunic

- Elastic Pull-on•
- No sleeve•

Pattern #847

Sunnie Tunic

- Elastic Pull-on•
- No sleeve•

Pattern #848

Angles Tunic

- Back zipper•
- Long fitted sleeve•

Pattern #849

Button Halter Angel

- Elastic Pull-on•
- No sleeve•

Pattern #850

Bare Shoulder Angel

- Elastic Pull-on•
- No sleeve•

Pattern #851

Cut Away Skirt

- Elastic Pull-on•
- No sleeve•

Pattern #852

Triple V's

- Elastic Pull-on•
- 400 C-1 tatter•

Pattern #853

Flame Cut-out

- Zippered Back•
- 500 C-1 layered•

Pattern #854

Bolero Inset

- Zippered back•
- 500 C-2 skirt•

Pattern #855

Haltered Tux

- Zippered Back•
- 500 C-1 layered skirt•

Pattern #856

Tatter Halter

Pattern #857

Chaucery Tunic

- Elastic back•
- Tunic skirt•

Pattern #858

New Halter

- Elastic Back•
- 500 tablecloth skirt•

Pattern #859

S'less Camisole

- Elastic Pull-on•
- Tunic skirt•

Pattern #860

Split Sleeve Tunic

- Back zipper•
- Short sleeve•

Pattern #861

Strap 'n Sleeve

- Elastic Pull-on•
- Zippered back•
- Fitted sleeve•

Pattern #862

C2 Add-on Skirt

- Skirt only•
- 200-400-500 cut lines•

Pattern #863

Summer Breeze Tunic

- Elastic pull-on•
- No sleeve•

Pattern #864

C1.5 Add-on Skirt

- Skirt only•
- 200-400-500 cut lines•

Pattern #865

Tulip+ Skirt

- No sleeve•
- Elastic pull-on•
- Fuller panel skirt•

Pattern #866

Short Tatter C-1

- No sleeve•
- Elastic pull-on•
- #200-C-1 skirt•
- Short tatter edging•

Pattern #867

Chaucery C-2 Skirt

- No sleeve•
- Elastic pull-on•
- #500-C-2 skirt•

Pattern #868

Matador

- Flounce 3/4 sleeve•
- Elastic pull-on•
- Panel front C-1 back skirt•

Pattern #869

Calypso Tunic

- Elastic pull-on•

Pattern #870

Riverdance

- 500 skirt
- Zippered back•
- #3/4 Angle sleeve•
- Toublecloth skirt•

Pattern #871

Tulip+ Skirt

- Fitted sleeve•
- Elastic pull-on•
- Short C-1 Tatter skirt•

Pattern #872

Short Tat Halter

- Elastic back•
- 200 C-1 tatter skirt•

Pattern #873

500 C-1 Side Drop

- Elastic Back•
- 200 C-1 side drop skirt•

Pattern #874

Diamond Back

- Elastic Pull-on•
- 500 C-1 Tablecloth skirt•

Pattern #875

500 C-1 Side Drop

- Elastic back•
- 500 C-1 Side Drop•

Pattern #876

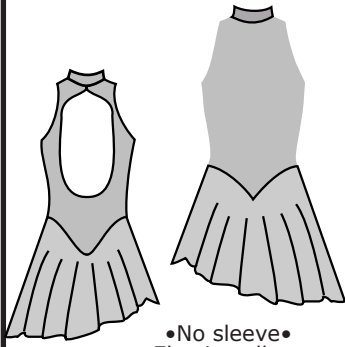
200 Ruffled Halter



- No sleeve•
- Elastic pull-on•
- #200-A-line side drop•

Pattern #877

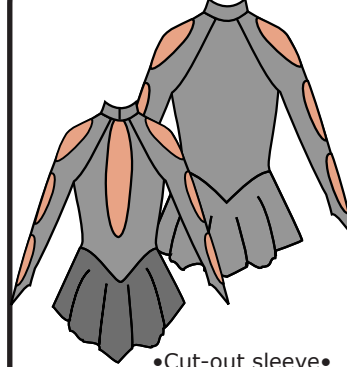
200 Open Back



- No sleeve•
- Elastic pull-on•
- #200-C-1 side drop•

Pattern #878

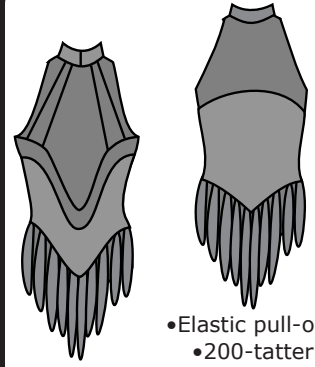
200 Open Sleeve



- Cut-out sleeve•
- 200-C-1 skirt•

Pattern #879

200 Crop Tatter



- Elastic pull-on•
- 200-tatter skirt•

Pattern #880

Flutters N Scallops



Pattern #881

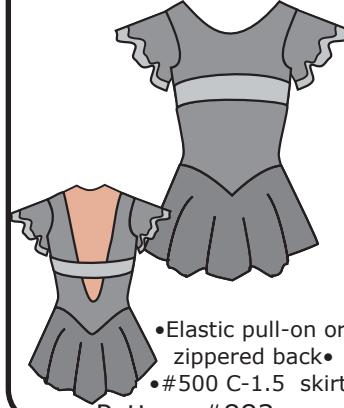
Laced Sweetheart



- Long and 3/4 Flounce sleeve•
- Elastic pull-on or zippered back•
- #500 C-2 layered skirt•

Pattern #882

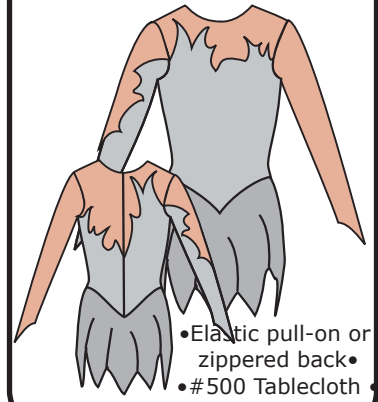
Flutter Crop



- Elastic pull-on or zippered back•
- #500 C-1.5 skirt•

Pattern #883

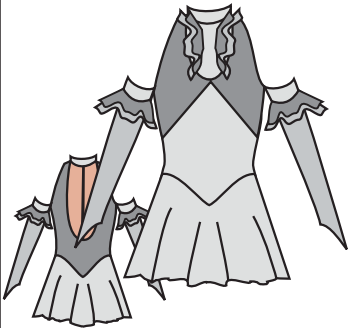
Iced Fire



- Elastic pull-on or zippered back•
- #500 Tablecloth•

Pattern #884

Serendipity



- Flutter drop sleeve•
- Elastic pull-on or zippered back•
- #200 Long C-1 skirt•

Pattern #885