

600-SERIES

The 600 Series is the start of our Cover-up Skatewear...see the inset sleeve and raglan sleeve jackets. Jackets can be made for practice or competition. Use Fleece fabric, LYCRA over fleece, velvet, etc; the fabric does not have to be "stretchy". Great, done in material to match dress or pants, use separating sports zipper. The pants are pull-ups that can be finished at the ankle with cuffing, turned and hemmed or straps under the boot...can place zippers in the seams for ease over the skates. These patterns can be used for girls/ladies and boys/men.

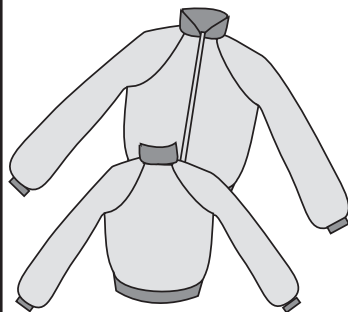
Cover-up Series

Inset Sleeve Jacket



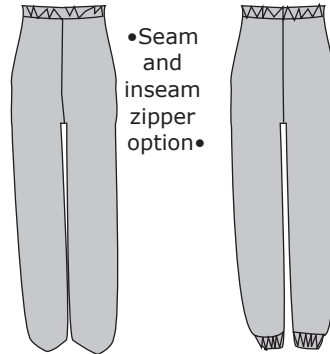
- Long Sleeve•Full Sleeve•
 - Lined or Unlined•
 - Zippered front•
- Pattern #601

Inset Sleeve Jacket



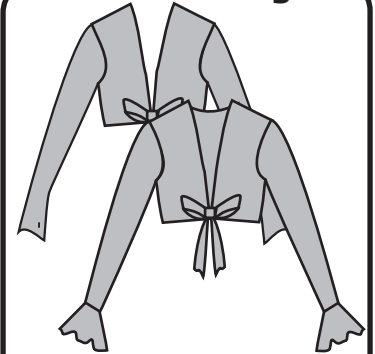
- Long Sleeve•Full Sleeve•
 - Lined or Unlined•
 - Zippered front•
- Pattern #602

Elastic Pull-on Pant



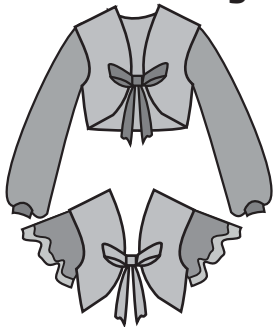
- Elastic pull-on pants•
 - Cuffed or uncuffed•
- Pattern #603

Fitted Shrug



- Fitted extended sleeve•
 - Flounce sleeve•
 - Tie front•
- Pattern #604

Flutter Shrug



- Full belled sleeve•
 - Short flutter sleeve•
 - Tie front•
- Pattern #605